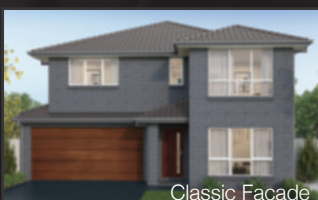


CALIFORNIA 32 MK2



Modern Facade



Classic Facade



Metro Facade



Hamptons Facade



Designer Facade

CALIFORNIA 32 MK2

GROUND FLOOR 130.05m²

FIRST FLOOR 109.16m²

GARAGE 33.29m²

PORCH 1.56m²

ALFRESCO 17.58m²

TERRACE 9.24m²

TOTAL AREA 300.88m²

WIDTH 11.03m

DEPTH 18.95m

Your family's sanctuary awaits in our California 32 MK2. With the kitchen located at the heart of the home and living spaces seamlessly branching out from it, you'll be entertaining and charming your family and friends for hours on end. Other key features to note include the fifth bedroom, large master suite and family room upstairs for the kids to play.

5

Bedrooms

3

Bathrooms

2

Car Garage

CALIFORNIA 32 MK2

5

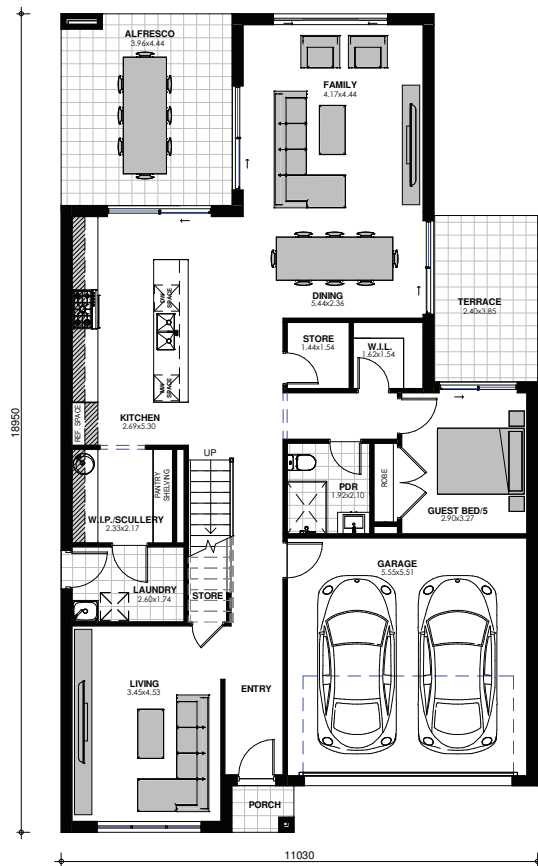
BEDROOMS

3

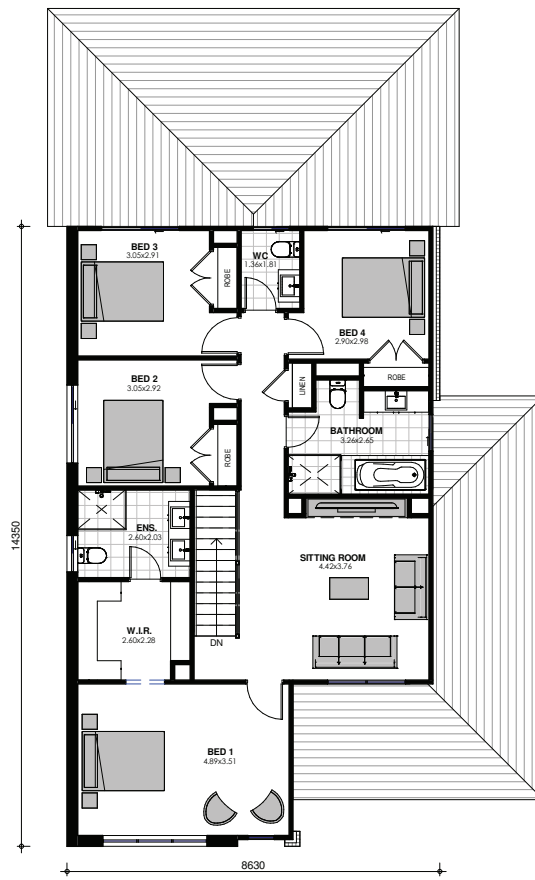
BATHROOMS

2

CAR GARAGE



GROUND FLOOR



FIRST FLOOR

Images are shown for illustrative purposes and may not always represent the final product. Photographs may depict fixtures, finishes and features not supplied by ZAC Homes. Measurements are based on standard floorplan/facades and may vary. Garage doors depicted may be represented by upgraded options which are not included in the façade price. No allowance for render, Moroka finish will be supplied where shown. Where timber look finish has been shown, cladding from our standard range will be provided. All designs are copyright to ZAC Homes Pty Ltd. Builders License No. 47259C - Dated: Aug 1, 2018