

CALIFORNIA 32



Modern Facade



Classic Facade



Metro Facade



Hamptons Facade



Designer Facade

CALIFORNIA 32

GROUND FLOOR 138.78m²

FIRST FLOOR 116.93m²

GARAGE 34.92m²

PORCH 2.26m²

ALFRESCO 10.80m²

TERRACE 9.24m²

TOTAL AREA 303.69m²

WIDTH 11.03m

DEPTH 18.95m

Discover our California 32 for your contemporary lifestyle needs. Entertain family and friends around the large island bench that overlooks the dining and terrace area and enchant every guest with the spaciousness of the family, living and alfresco.

If your family is looking for room to grow or you have guests over for the night, let them find comfort in the fifth bedroom and complete bathroom downstairs.

5

Bedrooms

3

Bathrooms

2

Car Garage

ZACHomes

CALIFORNIA 32

5

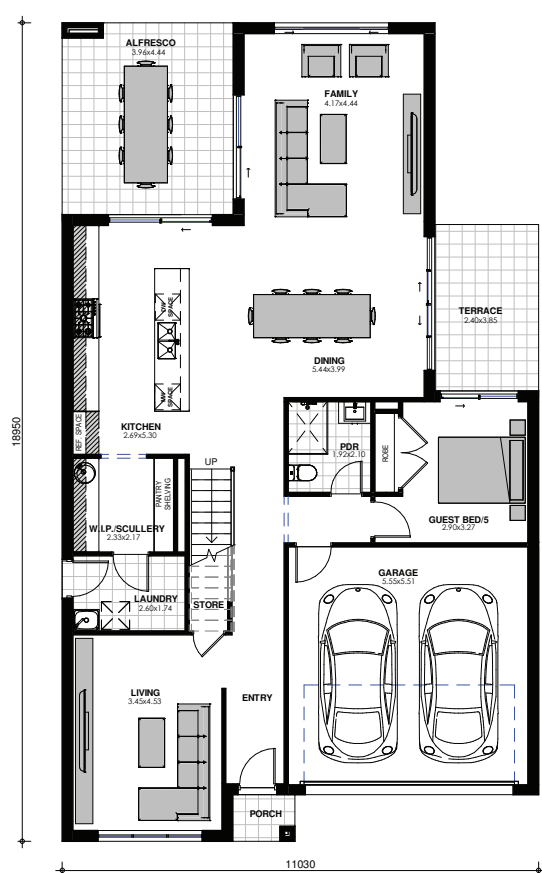
BEDROOMS

3

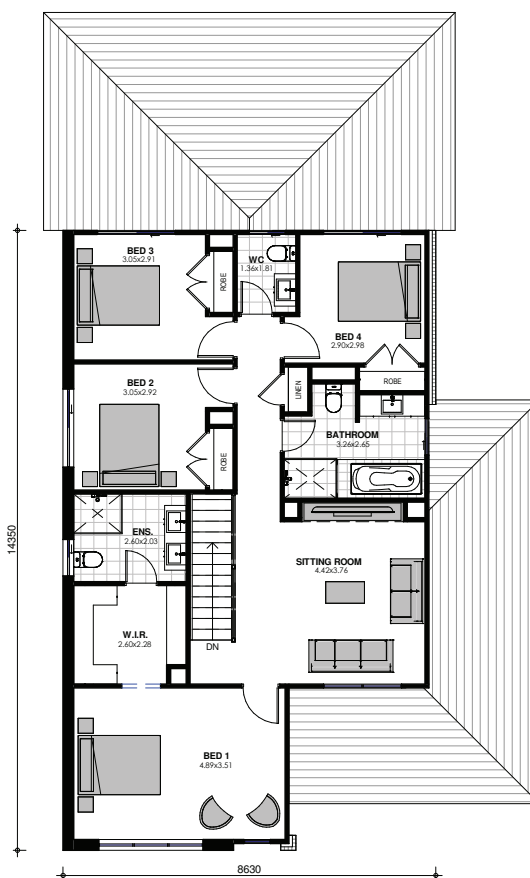
BATHROOMS

2

CAR GARAGE



GROUND FLOOR



FIRST FLOOR

Images are shown for illustrative purposes and may not always represent the final product. Photographs may depict fixtures, finishes and features not supplied by ZAC Homes. Measurements are based on standard floorplan/facades and may vary. Garage doors depicted may be represented by upgraded options which are not included in the façade price. No allowance for render, Moroka finish will be supplied where shown. Where timber look finish has been shown, cladding from our standard range will be provided. All designs are copyright to ZAC Homes Pty Ltd. Builders License No. 47259C - Dated: Aug 1, 2018

ZACHomes