

CALIFORNIA 35



GROUND FLOOR 142.40m²
FIRST FLOOR 122.98m²
GARAGE 34.67m²
PORCH 1.68m²
ALFRESCO 17.11m²
TERRACE 10.32m²
TOTAL AREA 329.16m²

WIDTH 11.75m
DEPTH 18.95m

CALIFORNIA 35

This sophisticated design cleverly caters to your family's changing needs from entertaining on a weekend to basking in sunlight under the two outdoor spaces or finding cosy relief in the living or private sitting room upstairs.

5 Bedrooms 3 Bathrooms 2 Car Garage

CALIFORNIA 35

5

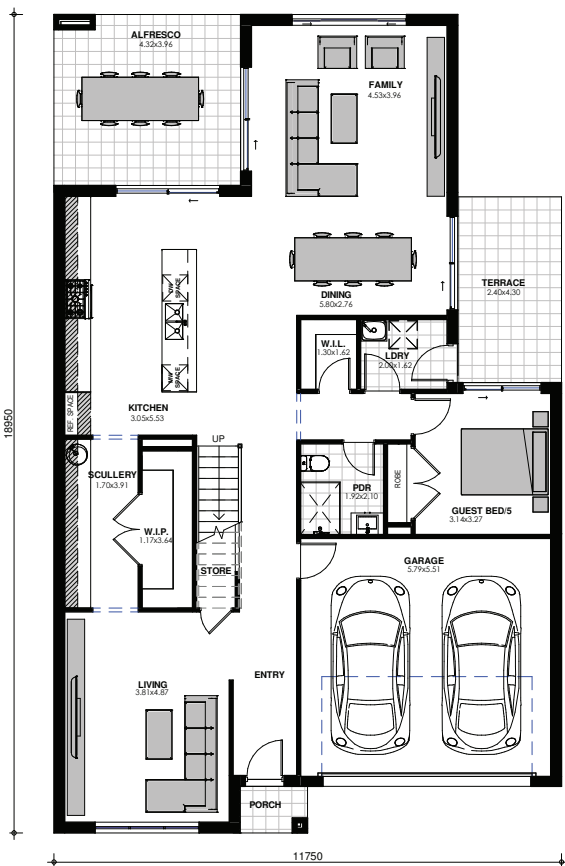
BEDROOMS

3

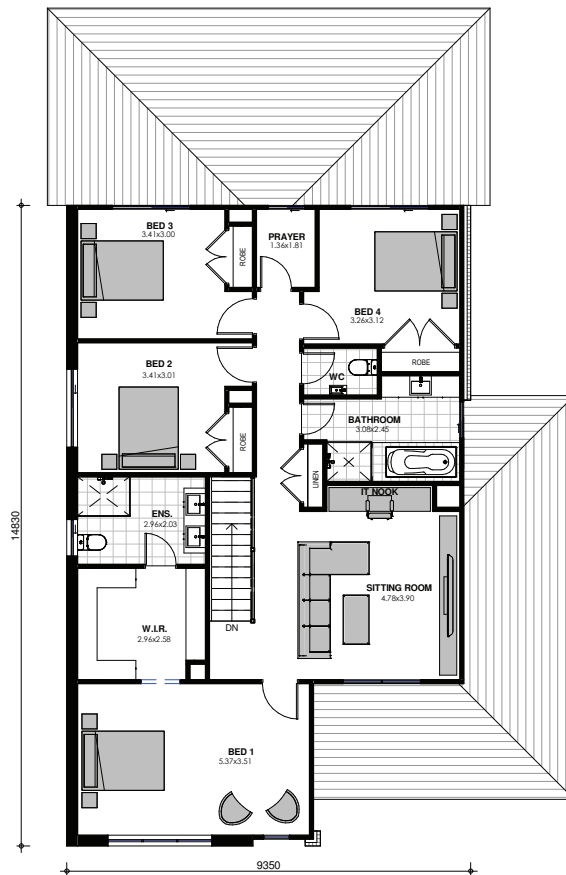
BATHROOMS

2

CAR GARAGE



GROUND FLOOR



FIRST FLOOR

Images are shown for illustrative purposes and may not always represent the final product. Photographs may depict fixtures, finishes and features not supplied by ZAC Homes. Measurements are based on standard floorplan/facades and may vary. Garage doors depicted may be represented by upgraded options which are not included in the façade price. No allowance for render, Moroka finish will be supplied where shown. Where timber look finish has been shown, cladding from our standard range will be provided. All designs are copyright to ZAC Homes Pty Ltd. Builders License No. 47259C - Dated: Aug 1, 2018