

DUBAI 35



Classic Facade



Modern Facade



Hamptons Facade



Metro Facade

GROUND FLOOR 146.13m²

FIRST FLOOR 125.02m²

GARAGE 34.15m²

PORCH 2.70m²

ALFRESCO 17.28m²

TOTAL AREA 325.28m²

WIDTH 11.99m

DEPTH 18.35m

DUBAI 35

Your sophisticated haven away from the hustle and bustle of daily life awaits you.

From the gourmet kitchen that overlooks the alfresco and family room, to the sizeable home theatre for quiet movie nights in with your family and friends and the fifth bedroom for a growing family, there's a space for everyone and every need.

5

Bedrooms

3

Bathrooms

2

Car Garage

ZACHomes

DUBAI 35

5

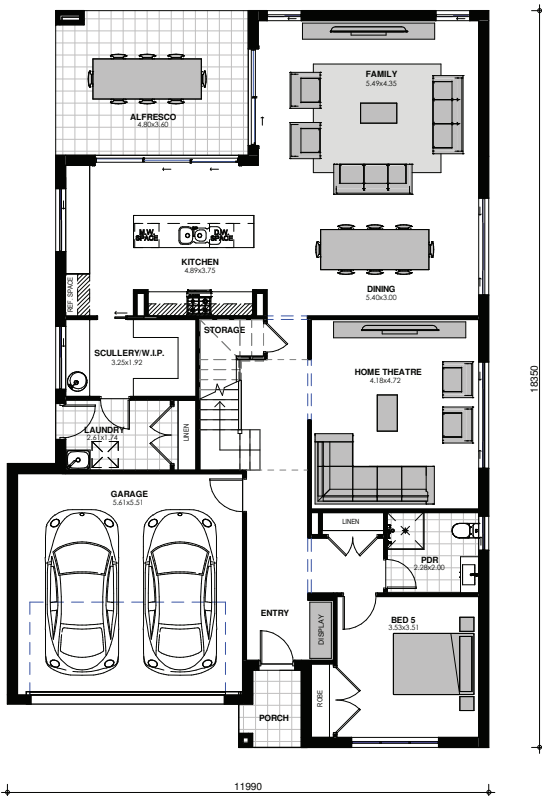
BEDROOMS

3

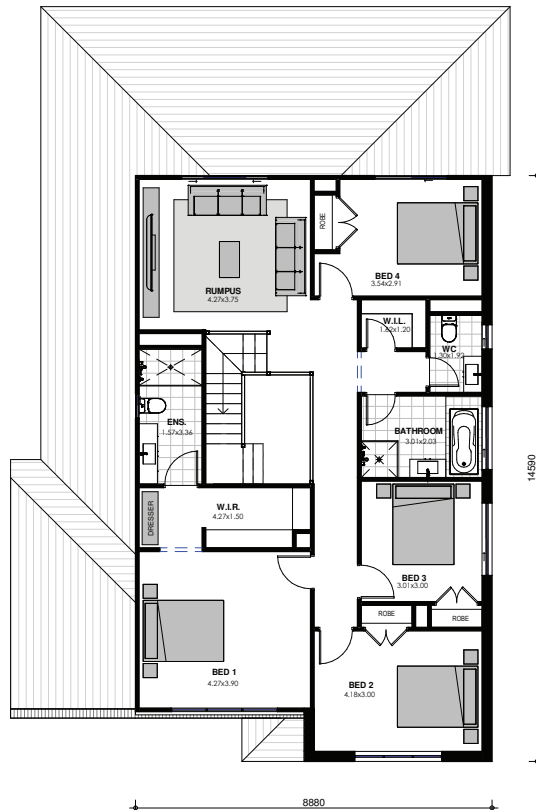
BATHROOMS

2

CAR GARAGE



GROUND FLOOR



FIRST FLOOR

Images are shown for illustrative purposes and may not always represent the final product. Photographs may depict fixtures, finishes and features not supplied by ZAC Homes. Measurements are based on standard floorplan/facades and may vary. Garage doors depicted may be represented by upgraded options which are not included in the façade price. No allowance for render, Moroka finish will be supplied where shown. Where timber look finish has been shown, cladding from our standard range will be provided. All designs are copyright to ZAC Homes Pty Ltd. Builders License No. 47259C - Dated: Aug 1, 2018