

DUBAI 37



Designer Facade



Classic Facade



Modern Facade



Hamptons Facade



Metro Facade

GROUND FLOOR 144.21m²

FIRST FLOOR 135.95m²

GARAGE 35.00m²

PORCH 3.16m²

ALFRESCO 21.71m²

TOTAL AREA 340.03m²

WIDTH 12.47m

DEPTH 17.99m

DUBAI 37

The grand entrance of your dreams is found in our Dubai 37. Enter in absolute awe and marvel at the grand staircase and void, seamlessly connecting the downstairs with the upper. Solace can be found in the home theatre and front living space, neatly tucked away from the living/kitchen space, as well as the upstairs rumpus room.

5

Bedrooms

3

Bathrooms

2

Car Garage

DUBAI 37

5

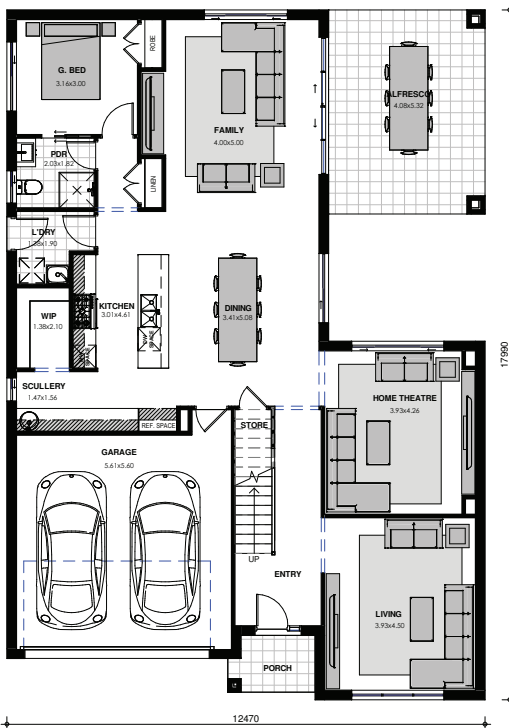
BEDROOMS

3

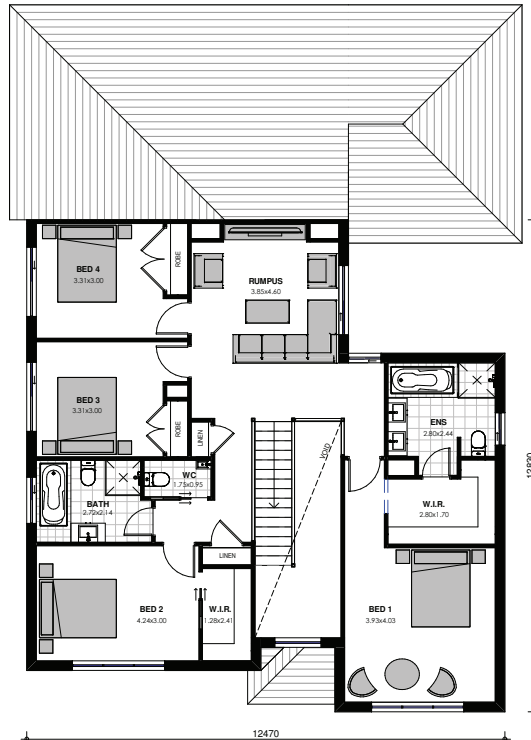
BATHROOMS

2

CAR GARAGE



GROUND FLOOR



FIRST FLOOR

Images are shown for illustrative purposes and may not always represent the final product. Photographs may depict fixtures, finishes and features not supplied by ZAC Homes. Measurements are based on standard floorplan/facades and may vary. Garage doors depicted may be represented by upgraded options which are not included in the façade price. No allowance for render, Moroka finish will be supplied where shown. Where timber look finish has been shown, cladding from our standard range will be provided. All designs are copyright to ZAC Homes Pty Ltd. Builders License No. 47259C - Dated: Aug 1, 2018