

DUBAI 40



GROUND FLOOR 160.11m²

FIRST FLOOR 145.47m²

GARAGE 35.70m²

PORCH 3.16m²

ALFRESCO 25.21m²

TOTAL AREA 369.65m²

WIDTH 12.47m

DEPTH 19.79m

DUBAI 40

If your family loves entertaining, look no further than our Dubai 40.

The sizeable gourmet kitchen overlooks the dining area, to the left of this lays the oversized family and connecting alfresco, creating a continuous flow and unity between the spaces.

5

Bedrooms

3

Bathrooms

2

Car Garage

ZACHomes

DUBAI 40

5

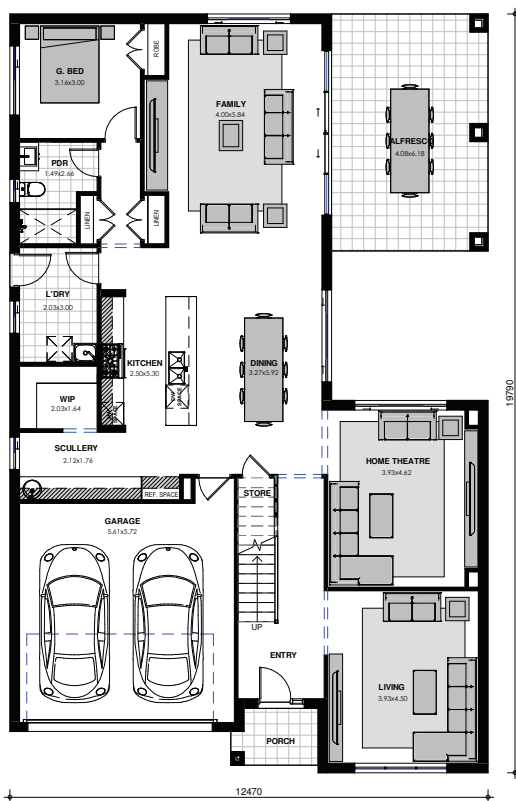
BEDROOMS

3

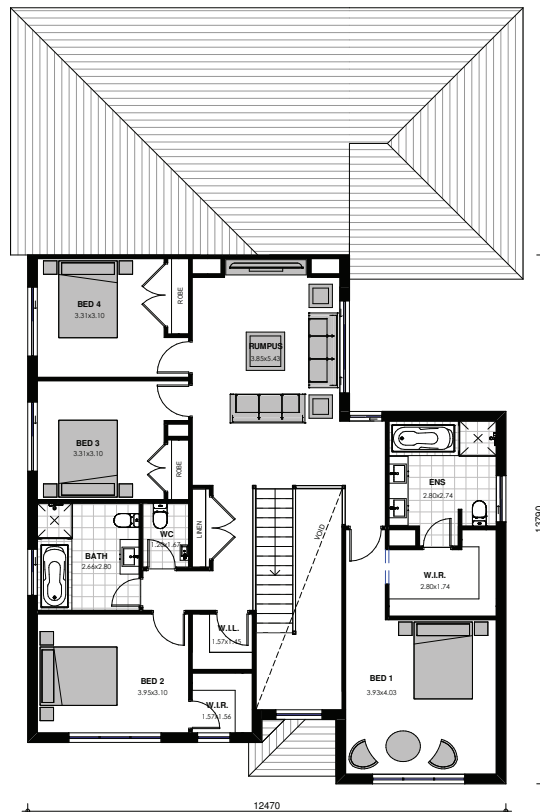
BATHROOMS

2

CAR GARAGE



GROUND FLOOR



FIRST FLOOR

Images are shown for illustrative purposes and may not always represent the final product. Photographs may depict fixtures, finishes and features not supplied by ZAC Homes. Measurements are based on standard floorplan/facades and may vary. Garage doors depicted may be represented by upgraded options which are not included in the façade price. No allowance for render, Moroka finish will be supplied where shown. Where timber look finish has been shown, cladding from our standard range will be provided. All designs are copyright to ZAC Homes Pty Ltd. Builders License No. 47259C - Dated: Aug 1, 2018

ZACHomes