

DUBAI 40 MK2



DUBAI 40 MK2

GROUND FLOOR 156.99m²

FIRST FLOOR 147.66m²

GARAGE 34.64m²

PORCH 5.32m²

ALFRESCO 22.58m²

TOTAL AREA 367.19m²

WIDTH 12.83m

DEPTH 22.43m

Our Dubai 40 MK2 is a haven fit for the grandest of lifestyles. Upon entering, marvel at the double height entry and striking staircase; walk further in and be greeted by multiple entertaining spaces and a striking gourmet kitchen which folds and flows out onto the oversized alfresco and living space. Other defining features include the generous master suite and four bedrooms, large walk in linen and private IT nook upstairs.

5

Bedrooms

3

Bathrooms

2

Car Garage

DUBAI 40 MK2

5

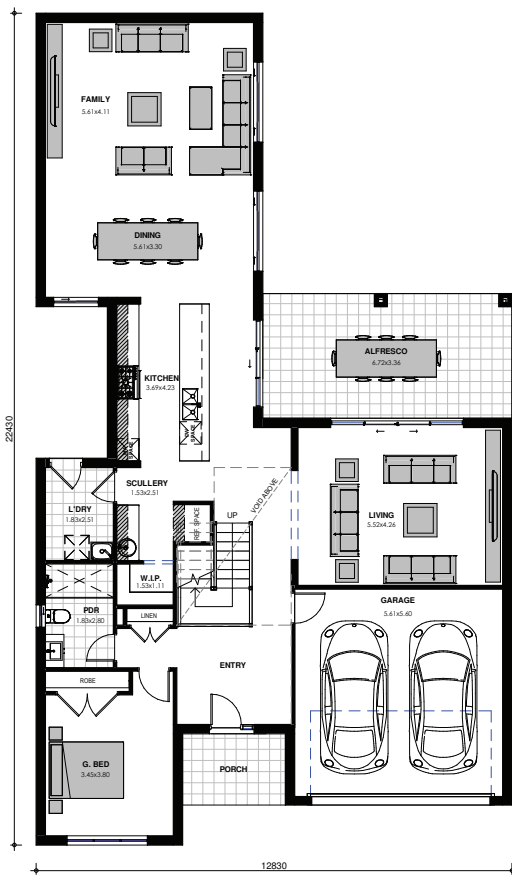
BEDROOMS

3

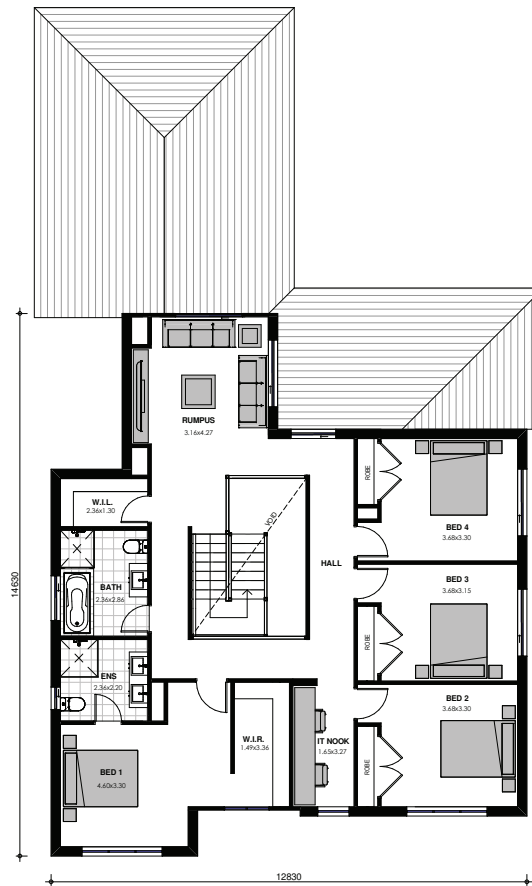
BATHROOMS

2

CAR GARAGE



GROUND FLOOR



FIRST FLOOR

Images are shown for illustrative purposes and may not always represent the final product. Photographs may depict fixtures, finishes and features not supplied by ZAC Homes. Measurements are based on standard floorplan/facades and may vary. Garage doors depicted may be represented by upgraded options which are not included in the façade price. No allowance for render, Moroka finish will be supplied where shown. Where timber look finish has been shown, cladding from our standard range will be provided. All designs are copyright to ZAC Homes Pty Ltd. Builders License No. 47259C - Dated: Aug 1, 2018