

# MACHU 29



**GROUND FLOOR 129.66m<sup>2</sup>**

**FIRST FLOOR 102.62m<sup>2</sup>**

**GARAGE 18.83m<sup>2</sup>**

**PORCH 2.94m<sup>2</sup>**

**ALFRESCO 14.76m<sup>2</sup>**

**TOTAL AREA 268.81m<sup>2</sup>**

**WIDTH 8.87m**  
**DEPTH 20.27m**

## MACHU 29

For a narrow lot design with all the added extras, no compromises will be made to build your dream home. The grand gourmet kitchen balances against the spacious family, dining and alfresco, creating a perfectly cohesive communal space. Spontaneous guests are no issue, with a fifth guest bedroom downstairs and adjacent complete bathroom.

5

Bedrooms

3

Bathrooms

1

Car Garage

ZACHomes

# MACHU 29

5

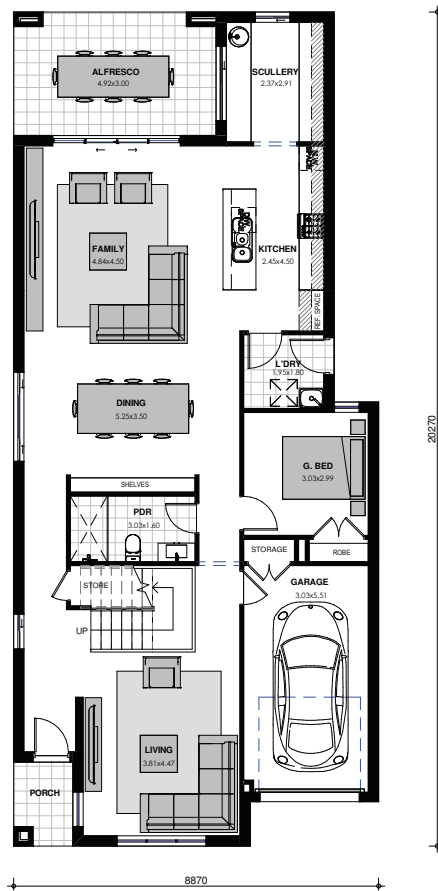
BEDROOMS

3

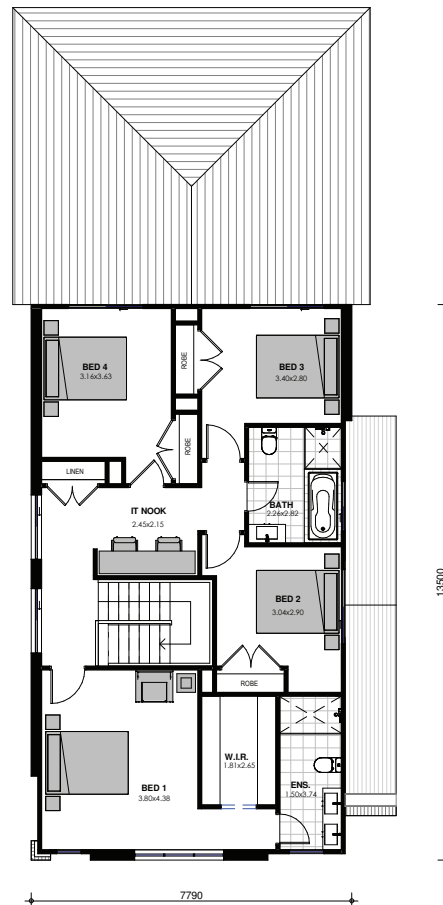
BATHROOMS

1

CAR GARAGE



GROUND FLOOR



FIRST FLOOR

Images are shown for illustrative purposes and may not always represent the final product. Photographs may depict fixtures, finishes and features not supplied by ZAC Homes. Measurements are based on standard floorplan/facades and may vary. Garage doors depicted may be represented by upgraded options which are not included in the façade price. No allowance for render, Moroka finish will be supplied where shown. Where timber look finish has been shown, cladding from our standard range will be provided. All designs are copyright to ZAC Homes Pty Ltd. Builders License No. 47259C - Dated: Aug 1, 2018

ZACHomes