

# MACHU 30



Classic Facade



Modern Facade



Metro Facade



Designer Facade

**GROUND FLOOR 114.11m<sup>2</sup>**

**FIRST FLOOR 113.53m<sup>2</sup>**

**GARAGE 34.41m<sup>2</sup>**

**PORCH 4.67m<sup>2</sup>**

**ALFRESCO 9.36m<sup>2</sup>**

**PATIO 6.56m<sup>2</sup>**

**TOTAL AREA 282.64m<sup>2</sup>**

**WIDTH 8.75m**  
**DEPTH 23.93m**

## MACHU 30

Celebrate special moments with family and friends or enjoy serenity with a good book in our Machu 30, which cleverly combines open plan spaces with ample private ones. Cook a splendid feast for the family in the capacious gourmet kitchen with island bench and entertain your guests in two outdoor spaces whilst the kids play upstairs in the retreat.

**4** **2.5** **2**  
Bedrooms Bathrooms Car Garage

ZACHomes

# MACHU 30

4

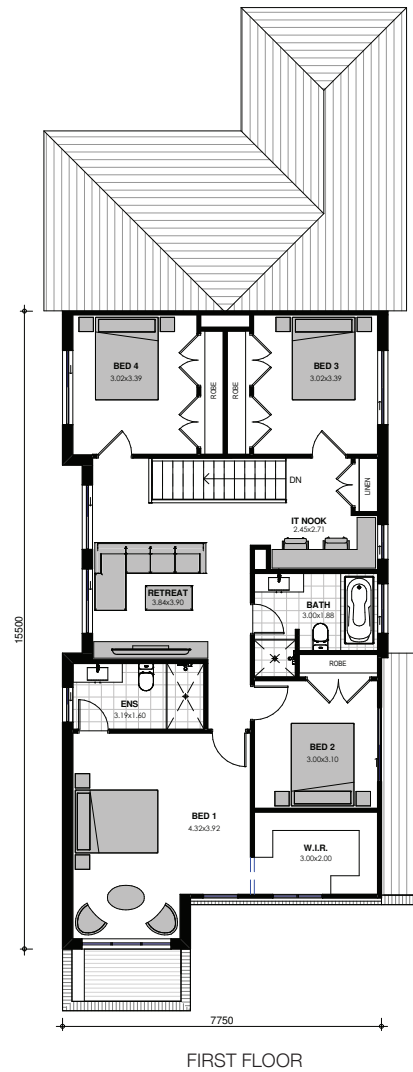
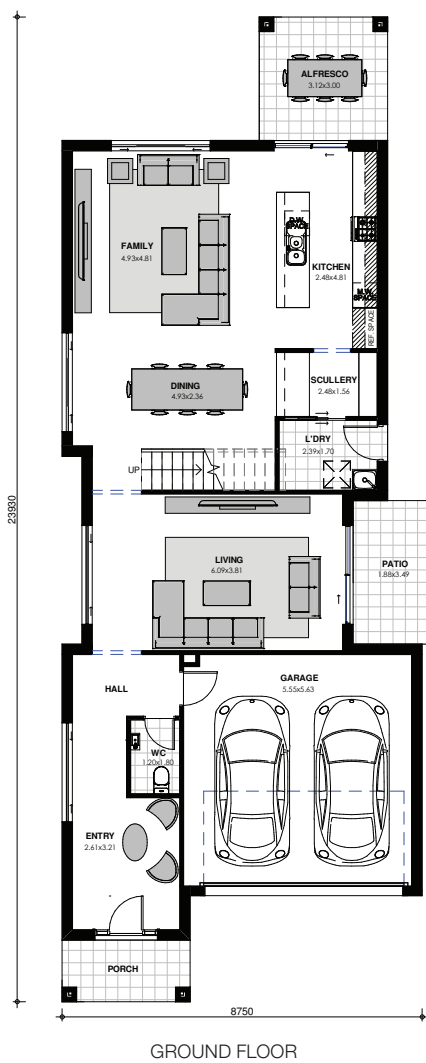
BEDROOMS

2.5

BATHROOMS

2

CAR GARAGE



Images are shown for illustrative purposes and may not always represent the final product. Photographs may depict fixtures, finishes and features not supplied by ZAC Homes. Measurements are based on standard floorplan/facades and may vary. Garage doors depicted may be represented by upgraded options which are not included in the façade price. No allowance for render, Moroka finish will be supplied where shown. Where timber look finish has been shown, cladding from our standard range will be provided. All designs are copyright to ZAC Homes Pty Ltd. Builders License No. 47259C - Dated: Aug 1, 2018

ZACHomes