

MACHU 31



MACHU 31

GROUND FLOOR 119.04m²

FIRST FLOOR 119.34m²

GARAGE 33.47m²

PORCH 4.67m²

ALFRESCO 9.00m²

PATIO 2.82m²

TOTAL AREA 288.34m²

WIDTH 8.57m
DEPTH 23.21m

Enjoy your quiet morning coffee as sunlight filters in through your patio and alfresco, warming up your kitchen, dining and family room. Exterior spaces seamlessly connect with the interior, creating a relaxing and therapeutic space for all to enjoy. Your contemporary family kitchen, with a generous butler's pantry, will share important family dinners and intimate special events, making it truly the heart and centre of your home.

4

Bedrooms

3

Bathrooms

2

Car Garage

MACHU 31

4

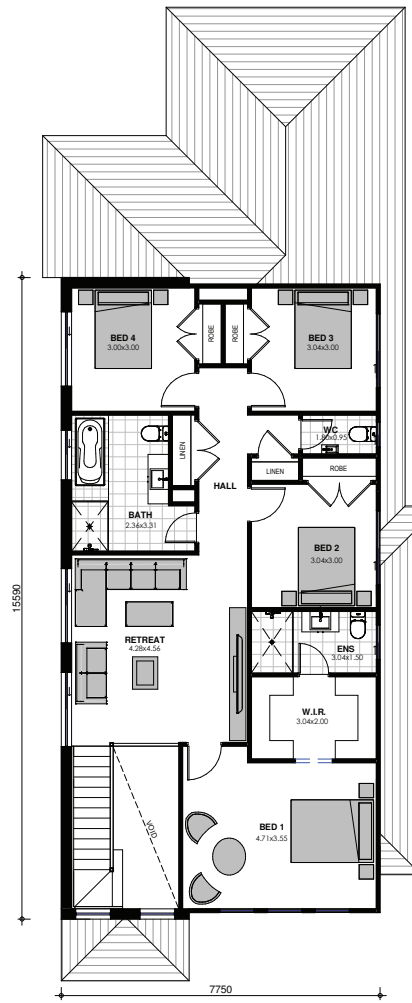
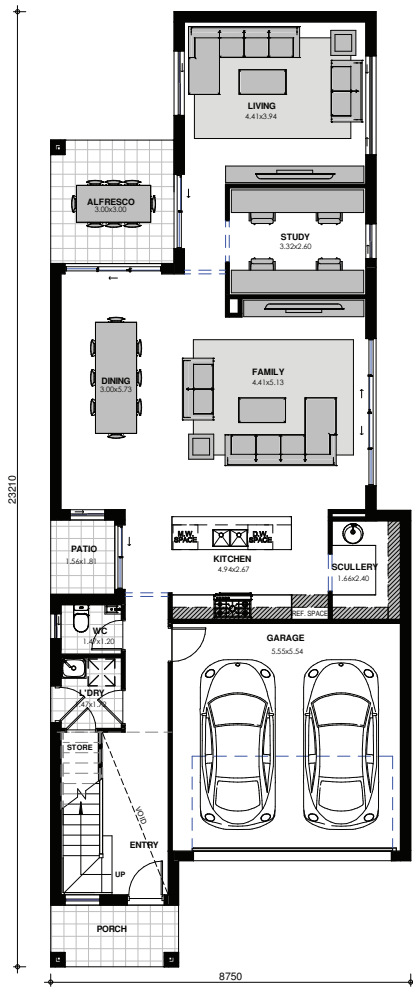
BEDROOMS

3

BATHROOMS

2

CAR GARAGE



Images are shown for illustrative purposes and may not always represent the final product. Photographs may depict fixtures, finishes and features not supplied by ZAC Homes. Measurements are based on standard floorplan/facades and may vary. Garage doors depicted may be represented by upgraded options which are not included in the façade price. No allowance for render, Moroka finish will be supplied where shown. Where timber look finish has been shown, cladding from our standard range will be provided. All designs are copyright to ZAC Homes Pty Ltd. Builders License No. 47259C - Dated: Aug 1, 2018