

NEVADA 23



GROUND FLOOR 172.43m²

FIRST FLOOR N/A

GARAGE 33.30m²

PORCH 1.56m²

ALFRESCO 9.41m²

TOTAL AREA 216.70m²

WIDTH 11.39m

DEPTH 20.39m

NEVADA 23

Step into a contemporary family home, boasting countless entertainment options like a generous family room that effortlessly integrates with the alfresco, cinematic home theatre and opulent gallery kitchen with all the necessities and more. Escape into your own private oasis with four large bedrooms including a grand master suite.

4

Bedrooms

2.5

Bathrooms

2

Car Garage

ZACHomes

NEVADA 23

4

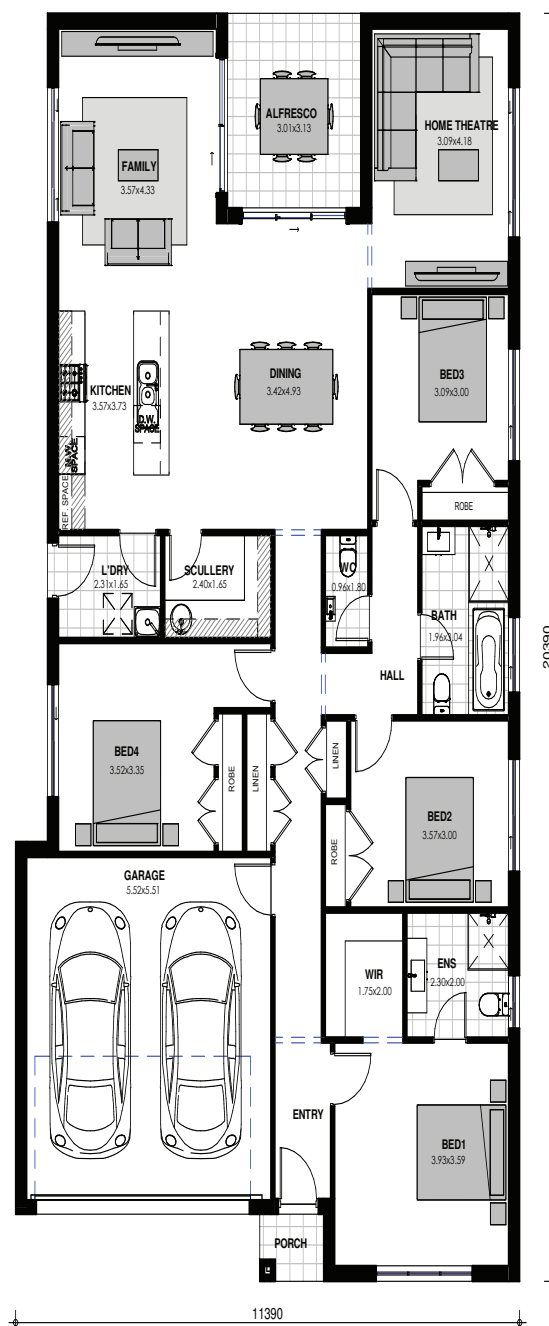
BEDROOMS

2.5

BATHROOMS

2

CAR GARAGE



Images are shown for illustrative purposes and may not always represent the final product. Photographs may depict fixtures, finishes and features not supplied by ZAC Homes. Measurements are based on standard floorplan/facades and may vary. Garage doors depicted may be represented by upgraded options which are not included in the façade price. No allowance for render, Moroka finish will be supplied where shown. Where timber look finish has been shown, cladding from our standard range will be provided. All designs are copyright to ZAC Homes Pty Ltd. Builders License No. 47259C - Dated: Aug 1, 2018

ZACHomes