

# NEVADA 26



Metro Facade



Classic Facade



Modern Facade



Hamptons Facade



Designer Facade

## NEVADA 26

**GROUND FLOOR** 187.18m<sup>2</sup>

**FIRST FLOOR** N/A

**GARAGE** 33.64m<sup>2</sup>

**PORCH** 2.47m<sup>2</sup>

**ALFRESCO** 14.76m<sup>2</sup>

**TOTAL AREA** 238.05m<sup>2</sup>

**WIDTH** 11.39m

**DEPTH** 22.43m

If your dream is to entertain in the ultimate kitchen, look no further than this masterpiece. The extravagantly large kitchen bench stretches along the centre of the home, integrating perfectly with the family/living space and alfresco, creating the grandest open plan entertaining hub. Four generously sized bedrooms border the living space, as well as a private home theatre for quiet nights in with the family.

4

Bedrooms

2

Bathrooms

2

Car Garage

ZACHomes

# NEVADA 26

4

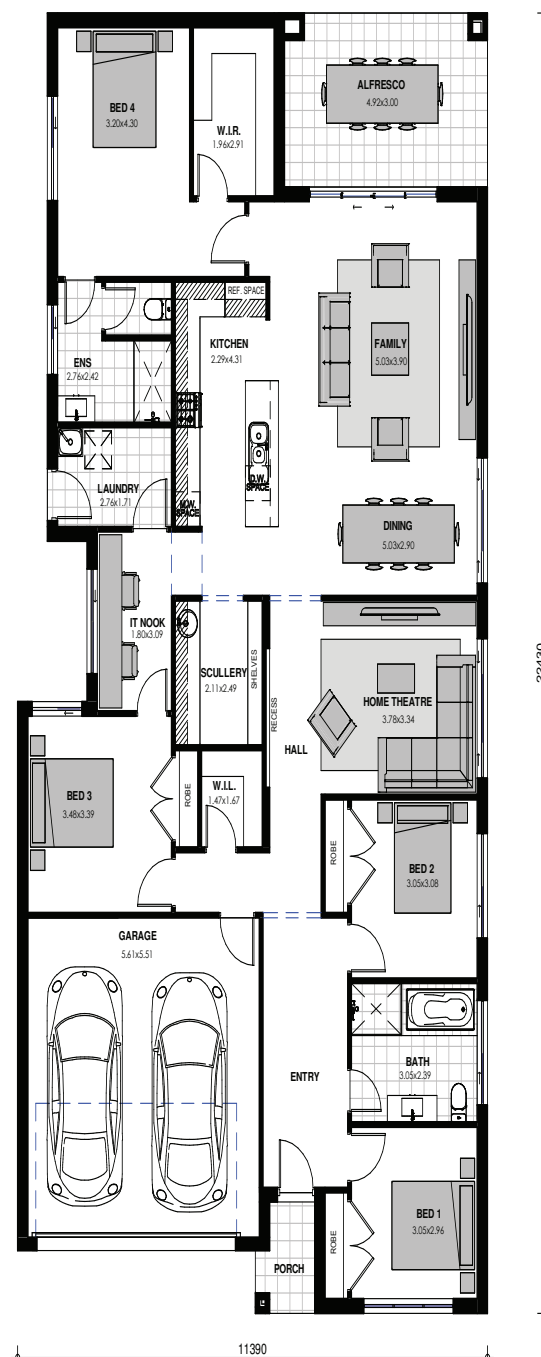
BEDROOMS

2

BATHROOMS

2

CAR GARAGE



Images are shown for illustrative purposes and may not always represent the final product. Photographs may depict fixtures, finishes and features not supplied by ZAC Homes. Measurements are based on standard floorplan/facades and may vary. Garage doors depicted may be represented by upgraded options which are not included in the façade price. No allowance for render, Moroka finish will be supplied where shown. Where timber look finish has been shown, cladding from our standard range will be provided. All designs are copyright to ZAC Homes Pty Ltd. Builders License No. 47259C - Dated: Aug 1, 2018

ZACHomes