

SIENNA 20 MK2



Designer Facade



Classic Facade



Modern Facade



Hamptons Facade



Metro Facade

SIENNA 20 MK2

GROUND FLOOR 152.20m²

FIRST FLOOR N/A

GARAGE 19.22m²

PORCH 2.21m²

ALFRESCO 12.24m²

TOTAL AREA 185.87m²

WIDTH 8.87m
DEPTH 22.43m

A narrow lot design with the works featuring a welcoming gallery kitchen and living area, generous sized bedrooms, large master suite and plenty of family and private spaces for every member to feel at home.

4

Bedrooms

2

Bathrooms

1

Car Garage

SIENNA 20 MK2

4

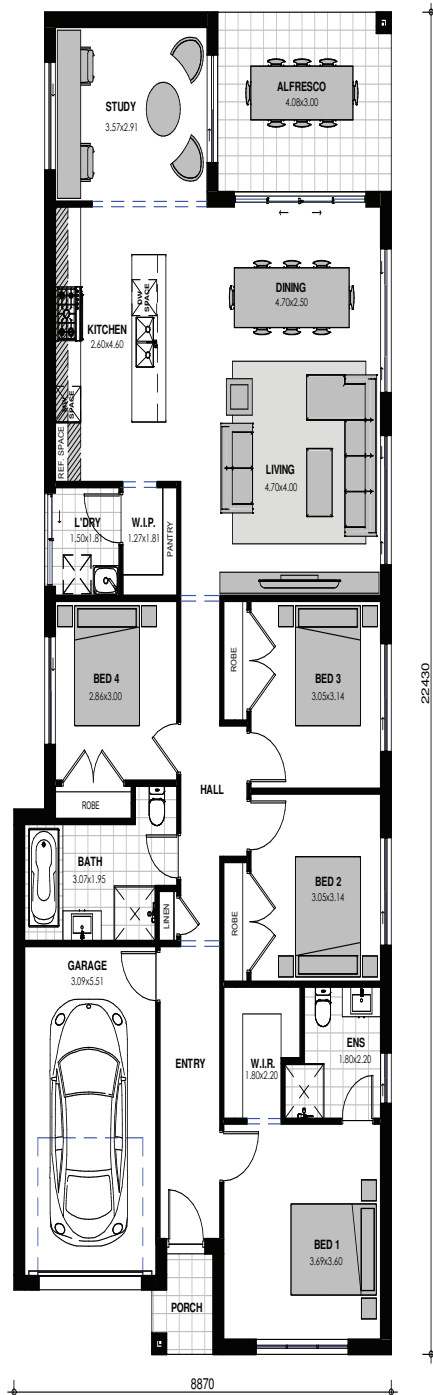
BEDROOMS

2

BATHROOMS

1

CAR GARAGE



Images are shown for illustrative purposes and may not always represent the final product. Photographs may depict fixtures, finishes and features not supplied by ZAC Homes. Measurements are based on standard floorplan/facades and may vary. Garage doors depicted may be represented by upgraded options which are not included in the façade price. No allowance for render, Moroka finish will be supplied where shown. Where timber look finish has been shown, cladding from our standard range will be provided. All designs are copyright to ZAC Homes Pty Ltd. Builders License No. 47259C - Dated: Aug 1, 2018

ZACHomes