

# SIENNA 20



Designer Facade



Classic Facade



Modern Facade



Hamptons Facade



Metro Facade

## SIENNA 20

**GROUND FLOOR 147.76m<sup>2</sup>**

**FIRST FLOOR N/A**

**GARAGE 19.11m<sup>2</sup>**

**PORCH 3.45m<sup>2</sup>**

**ALFRESCO 11.66m<sup>2</sup>**

**TOTAL AREA 181.98m<sup>2</sup>**

**WIDTH 8.87m**  
**DEPTH 22.31m**

This clever use of a narrow block incorporates a central gallery kitchen with a generously sized butler's pantry and free flowing open plan living with all the necessities. Ample private spaces, including a large master suite, allow family members to retreat and relax after a busy day.

**4**

Bedrooms

**2**

Bathrooms

**1**

Car Garage

ZACHomes

# SIENNA 20

4

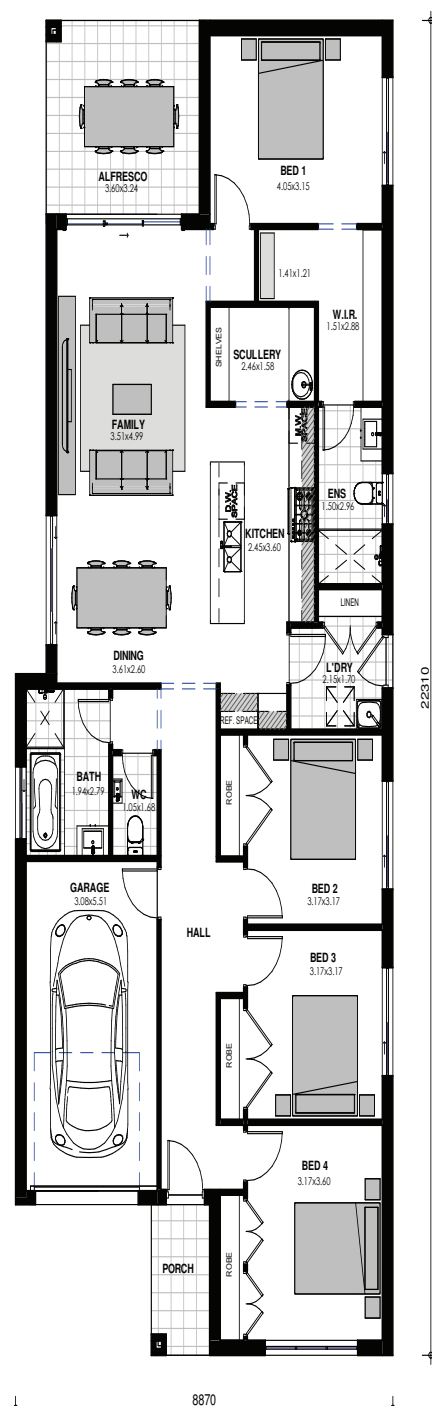
BEDROOMS

2

BATHROOMS

1

CAR GARAGE



Images are shown for illustrative purposes and may not always represent the final product. Photographs may depict fixtures, finishes and features not supplied by ZAC Homes. Measurements are based on standard floorplan/facades and may vary. Garage doors depicted may be represented by upgraded options which are not included in the façade price. No allowance for render, Moroka finish will be supplied where shown. Where timber look finish has been shown, cladding from our standard range will be provided. All designs are copyright to ZAC Homes Pty Ltd. Builders License No. 47259C - Dated: Aug 1, 2018

ZACHomes