

# SORRENTO 24 MK2



Modern Facade



Classic Facade



Metro Facade



Hamptons Facade



Designer Facade

**GROUND FLOOR** 169.59m<sup>2</sup>

**FIRST FLOOR** N/A

**GARAGE** 33.31m<sup>2</sup>

**PORCH** 4.37m<sup>2</sup>

**ALFRESCO** 11.49m<sup>2</sup>

**TOTAL AREA** 218.76m<sup>2</sup>

**WIDTH** 11.39m

**DEPTH** 20.50m

## SORRENTO 24 MK2

For luxury touches on a contemporary family home, The Sorrento 24 MK2 will suit your aesthetic and lifestyle requirements. The family spaces located to the rear, including the gallery kitchen, dining, family and home theatre, seamlessly integrate with one another for an effortless night of entertaining.

4

Bedrooms

2

Bathrooms

2

Car Garage

# SORRENTO 24 MK2

4

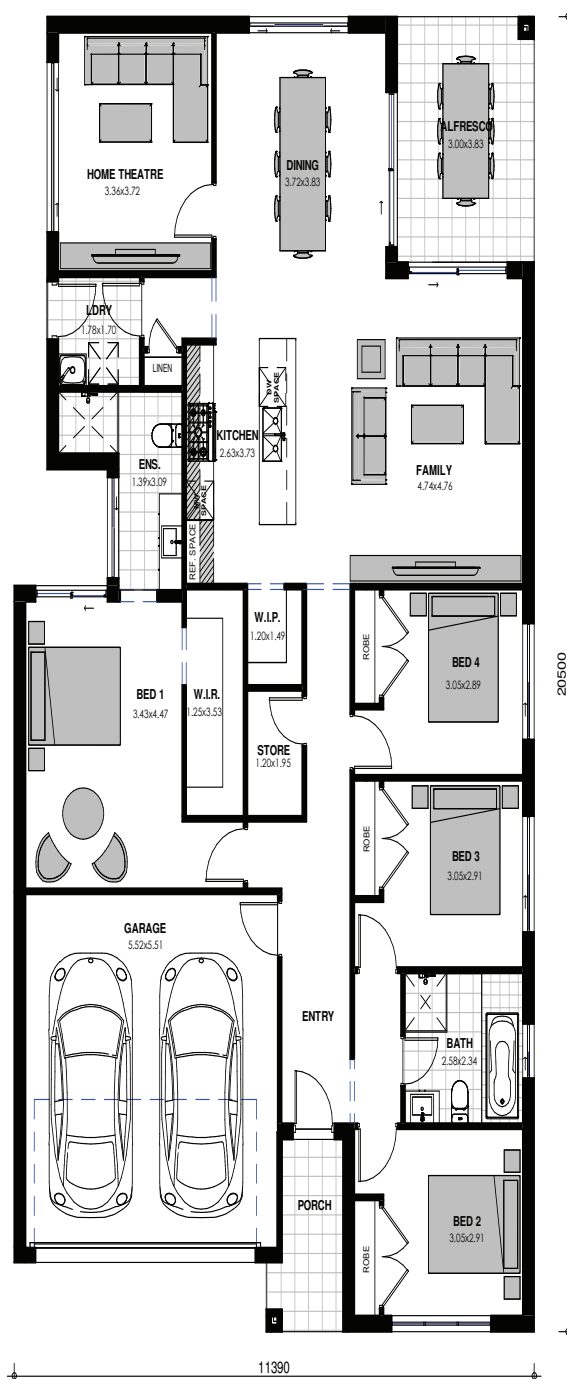
BEDROOMS

2

BATHROOMS

2

CAR GARAGE



Images are shown for illustrative purposes and may not always represent the final product. Photographs may depict fixtures, finishes and features not supplied by ZAC Homes. Measurements are based on standard floorplan/facades and may vary. Garage doors depicted may be represented by upgraded options which are not included in the façade price. No allowance for render, Moroka finish will be supplied where shown. Where timber look finish has been shown, cladding from our standard range will be provided. All designs are copyright to ZAC Homes Pty Ltd. Builders License No. 47259C - Dated: Aug 1, 2018