

# SORRENTO 24



Modern Facade



Classic Facade



Metro Facade



Hamptons Facade



Designer Facade

## SORRENTO 24

**GROUND FLOOR 169.59m<sup>2</sup>**

**FIRST FLOOR N/A**

**GARAGE 33.31m<sup>2</sup>**

**PORCH 4.37m<sup>2</sup>**

**ALFRESCO 11.49m<sup>2</sup>**

**TOTAL AREA 218.76m<sup>2</sup>**

**WIDTH 11.39m**

**DEPTH 20.50m**

With functionality at your fingertips, who could possibly deny this charming design? Four ample sized bedrooms situated at the front shelters the flexible open plan kitchen/family space to ensure your family's most precious moments are uninterrupted and yours to cherish forever.

4

Bedrooms

2

Bathrooms

2

Car Garage

ZACHomes

# SORRENTO 24

4

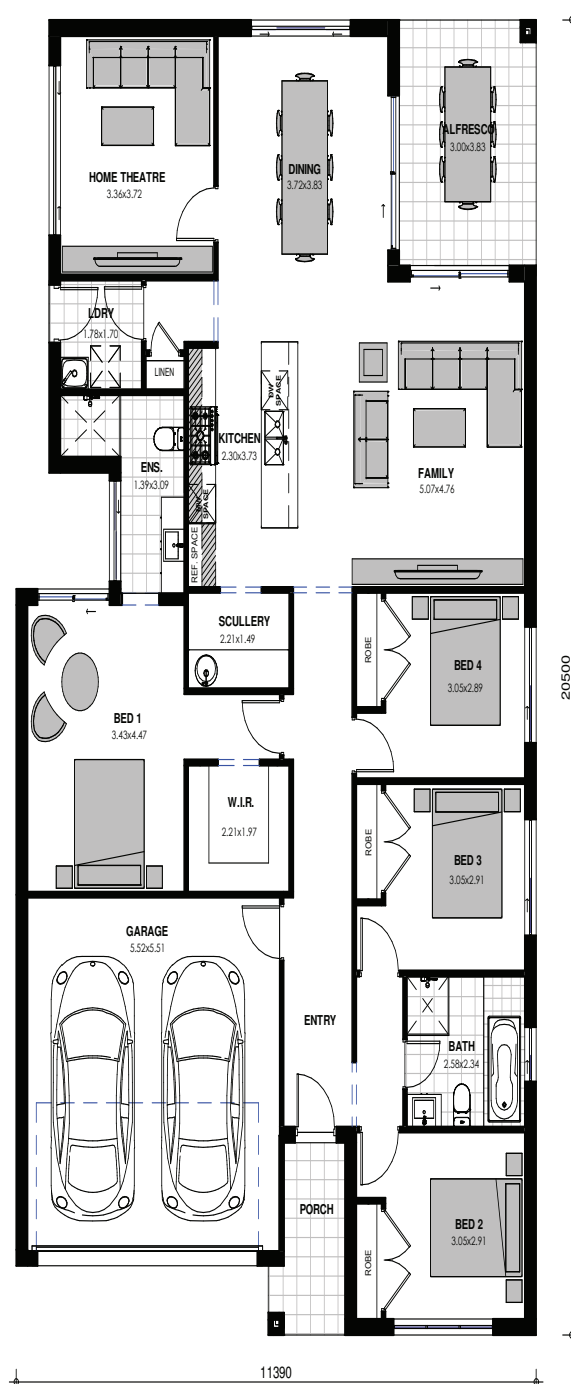
BEDROOMS

2

BATHROOMS

2

CAR GARAGE



Images are shown for illustrative purposes and may not always represent the final product. Photographs may depict fixtures, finishes and features not supplied by ZAC Homes. Measurements are based on standard floorplan/facades and may vary. Garage doors depicted may be represented by upgraded options which are not included in the façade price. No allowance for render, Moroka finish will be supplied where shown. Where timber look finish has been shown, cladding from our standard range will be provided. All designs are copyright to ZAC Homes Pty Ltd. Builders License No. 47259C - Dated: Aug 1, 2018

ZACHomes