

SORRENTO 27



Classic Facade



Metro Facade



Hamptons Facade



Designer Facade

GROUND FLOOR 187.05m²

FIRST FLOOR N/A

GARAGE 34.58m²

PORCH 3.16m²

ALFRESCO 13.33m²

TOTAL AREA 238.12m²

WIDTH 12.11m

DEPTH 20.50m

SORRENTO 27

The home of your dreams exists with our Sorrento 27 – it's the perfect combination of spacious family living spaces and relaxed private havens. Socialise with your guests around the contemporary gallery kitchen or drift towards the home theatre for an entertaining action-packed movie night in. The fluid transition between indoor and outdoor spaces create a lively hub you can use all year round.

4

Bedrooms

2

Bathrooms

2

Car Garage

SORRENTO 27

4

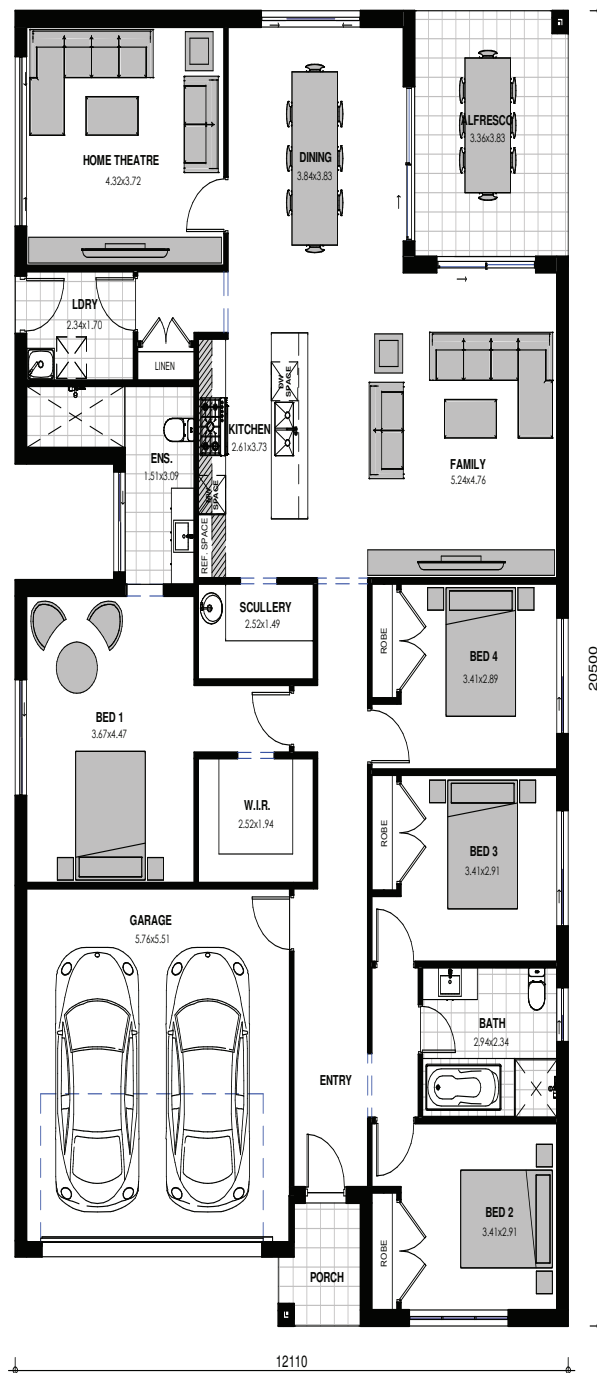
BEDROOMS

2

BATHROOMS

2

CAR GARAGE



Images are shown for illustrative purposes and may not always represent the final product. Photographs may depict fixtures, finishes and features not supplied by ZAC Homes. Measurements are based on standard floorplan/facades and may vary. Garage doors depicted may be represented by upgraded options which are not included in the façade price. No allowance for render, Moroka finish will be supplied where shown. Where timber look finish has been shown, cladding from our standard range will be provided. All designs are copyright to ZAC Homes Pty Ltd. Builders License No. 47259C - Dated: Aug 1, 2018