

AMAZON 22



AMAZON 22

GROUND FLOOR 88.23m²

FIRST FLOOR 80.88m²

GARAGE 23.15m²

PORCH 1.54m²

ALFRESCO 14.78m²

TOTAL AREA 208.57m²

WIDTH 13.43m

DEPTH 22.05m

The Amazon 22 is our entertainers duplex design. We have conveniently located the wet areas to maximise the living on the ground floor.

Boasting a study, storage nook, open dining and kitchen, oversized living area which flows onto a full length alfresco. Upstairs offers four bedrooms with robes, large walk in robe to Bed 1 and plenty of storage cupboards to both floors.

4

Bedrooms

2.5

Bathrooms

1

Car Garage

ZACHomes

AMAZON 22

4

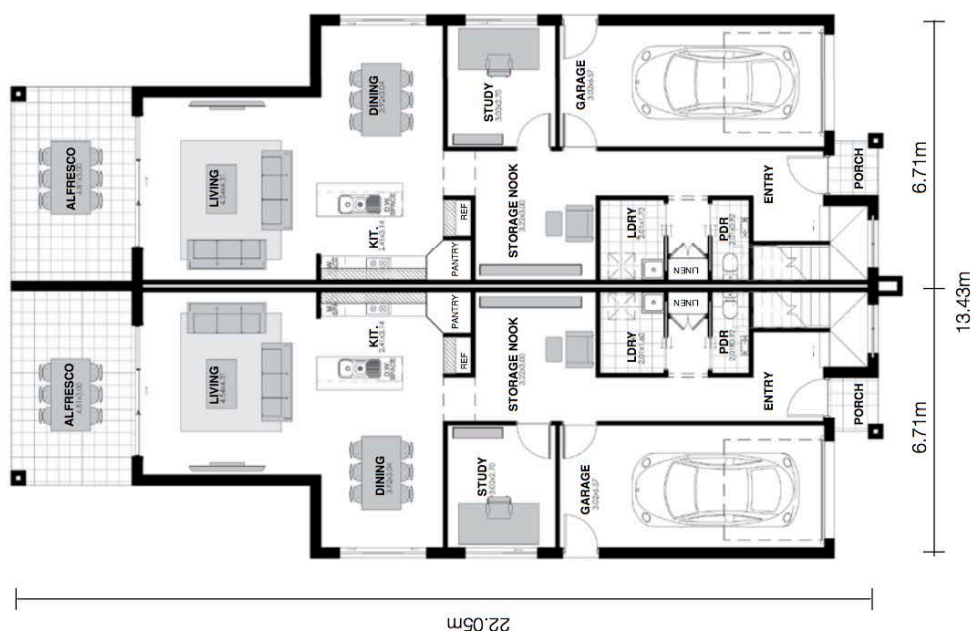
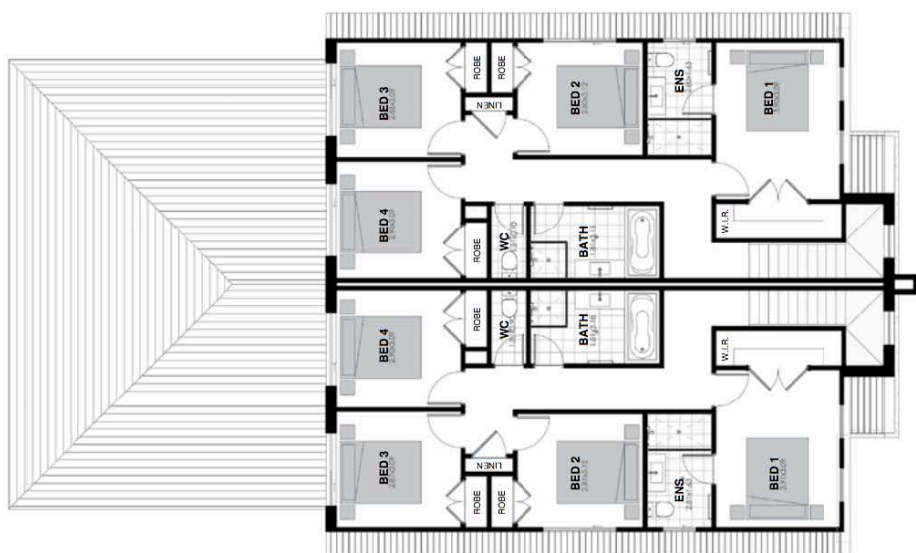
BEDROOMS

2.5

BATHROOMS

1

CAR GARAGE



Images are shown for illustrative purposes and may not always represent the final product. Photographs may depict fixtures, finishes and features not supplied by ZAC Homes. Measurements are based on standard floorplan/facades and may vary. Garage doors depicted may be represented by upgraded options which are not included in the façade price. No allowance for render, Moroka finish will be supplied where shown. Where timber look finish has been shown, cladding from our standard range will be provided. All designs are copyright to ZAC Homes Pty Ltd. Builders License No. 47259C - Dated: Aug 1, 2018

ZACHOMES