

AMAZON 23



CLASSIC



METRO



HAMPTONS



DESIGNER

AMAZON 23

GROUND FLOOR 77.35m²

FIRST FLOOR 99.42m²

GARAGE 18.07m²

PORCH 2.70m²

ALFRESCO 9.00m²

TOTAL AREA 211.01m²

WIDTH 12.22m

DEPTH 21.38m

The Amazon 23 is very similar to the 24 but has some smart layout changes that make this appealing to a whole different market. We have removed the guest room and replaced it with a light filled living room which has its very own patio!

This is great for those who require another living room or just want a creative architectural element in their home. Four bedrooms, rumpus and an oversized walk in robe to Bedroom 1 are still offered to the first floor, making it appealing to all.

4

Bedrooms

2.5

Bathrooms

1

Car Garage

ZACHomes

AMAZON 23

4

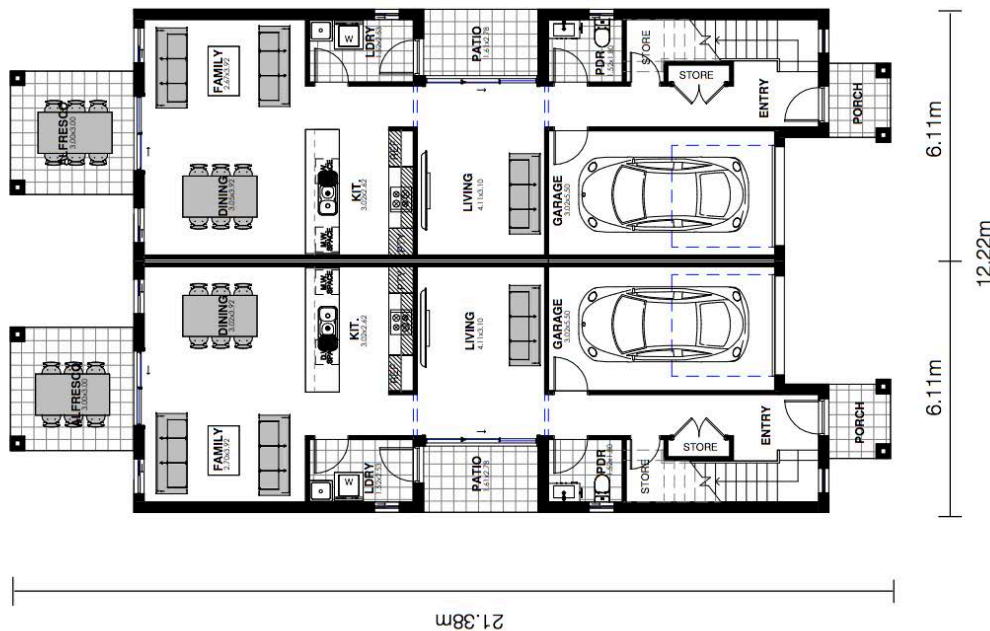
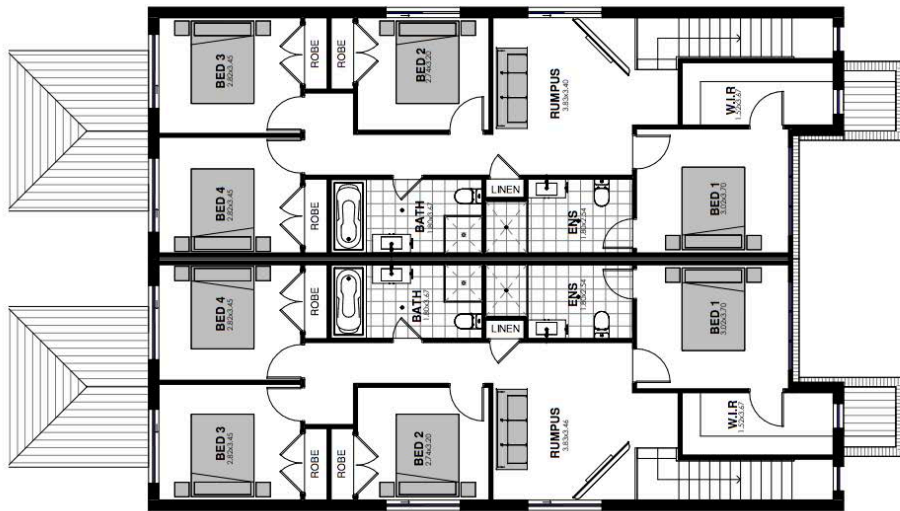
BEDROOMS

2.5

BATHROOMS

1

CAR GARAGE



Images are shown for illustrative purposes and may not always represent the final product. Photographs may depict fixtures, finishes and features not supplied by ZAC Homes. Measurements are based on standard floorplan/facades and may vary. Garage doors depicted may be represented by upgraded options which are not included in the façade price. No allowance for render, Moroka finish will be supplied where shown. Where timber look finish has been shown, cladding from our standard range will be provided. All designs are copyright to ZAC Homes Pty Ltd. Builders License No. 47259C - Dated: Aug 1, 2018

ZACHOMES