

DAINTREE 16 MK2



DAINTREE 16 MK2

GROUND FLOOR 56.56m²
FIRST FLOOR 67.08m²
GARAGE 18.79m²
PORCH 3.42m²
ALFRESCO 9.60m²
TOTAL AREA 155.45m²

WIDTH 13.00m
DEPTH 16.26m

The Daintree 16 MK2 Duplex provides affordable multi-dwelling living perfectly designed for family or an investment opportunity.

Containing 3 good sized bedrooms with Ensuite & WIR to the Master. 2.5 Bathrooms and a single garage. Enjoy the spacious open plan Kitchen and living area that leads onto your outdoor entertaining area.

3 Bedrooms
2.5 Bathrooms
1 Car Garage

DAINTREE 16 MK2

3

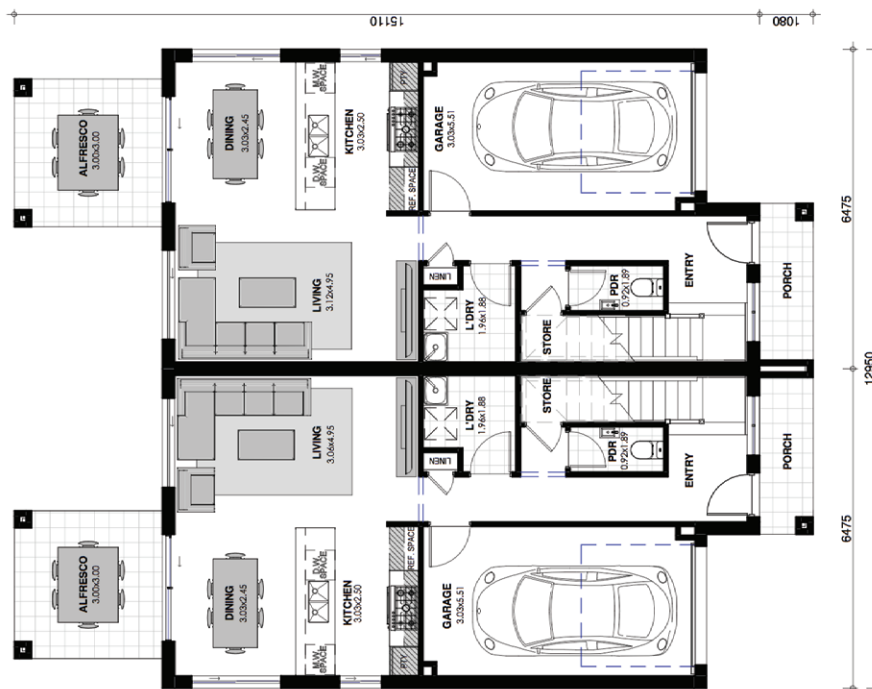
BEDROOMS

2.5

BATHROOMS

1

CAR GARAGE



Images are shown for illustrative purposes and may not always represent the final product. Photographs may depict fixtures, finishes and features not supplied by ZAC Homes. Measurements are based on standard floorplan/facades and may vary. Garage doors depicted may be represented by upgraded options which are not included in the façade price. No allowance for render, Moroka finish will be supplied where shown. Where timber look finish has been shown, cladding from our standard range will be provided. All designs are copyright to ZAC Homes Pty Ltd. Builders License No. 47259C - Dated: Aug 1, 2018

ZACHomes