

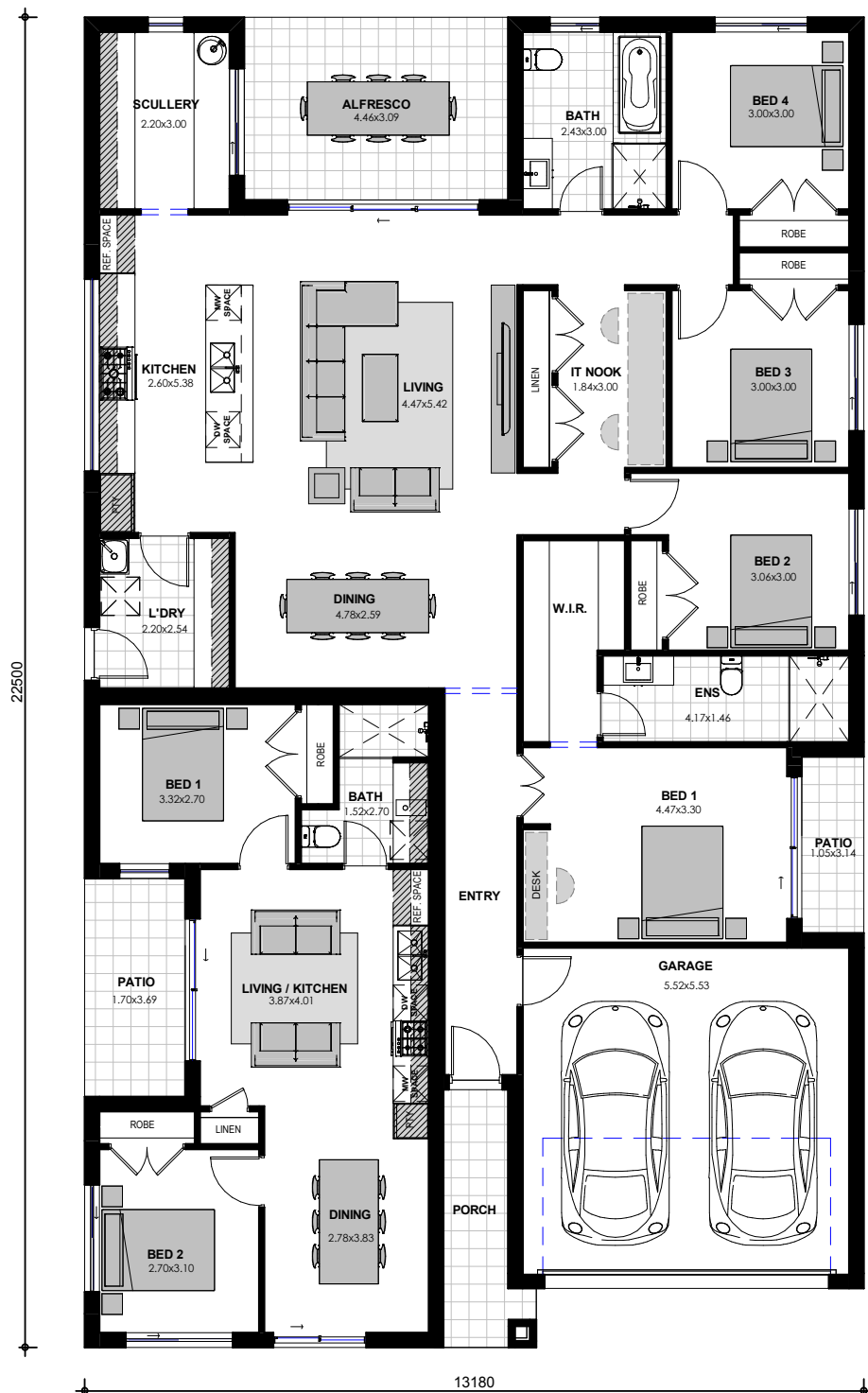
ECHO 31 MK2

HOUSE AND GRANNY FLAT



GROUND FLOOR	170.12m ²
GARAGE	34.08m ²
PORCH	5.23m ²
ALFRESCO	13.78m ²
PATIO	3.39m ²
GRANNY FLAT	58.14m ²
PATIO	6.27m ²
TOTAL AREA	291.01m ²
WIDTH	13.18m
DEPTH	22.50m

This home is perfect for the investor, first home buyer or someone with in-law accommodation. A front facing two bedroom granny flat joined to the main dwelling allows for ease of access and when in the main house you almost forget you have another dwelling attached. The main house focuses on space and has been designed to use every available bit of area to maximise the rooms and feel.



4

BEDROOMS

2

BATHROOMS

2

GARAGE

MAIN HOUSE

2

BEDROOMS

1

BATHROOMS

GRANNY FLAT

ZACHomes