



Sussex 24 Mod.

 4  2.5  2

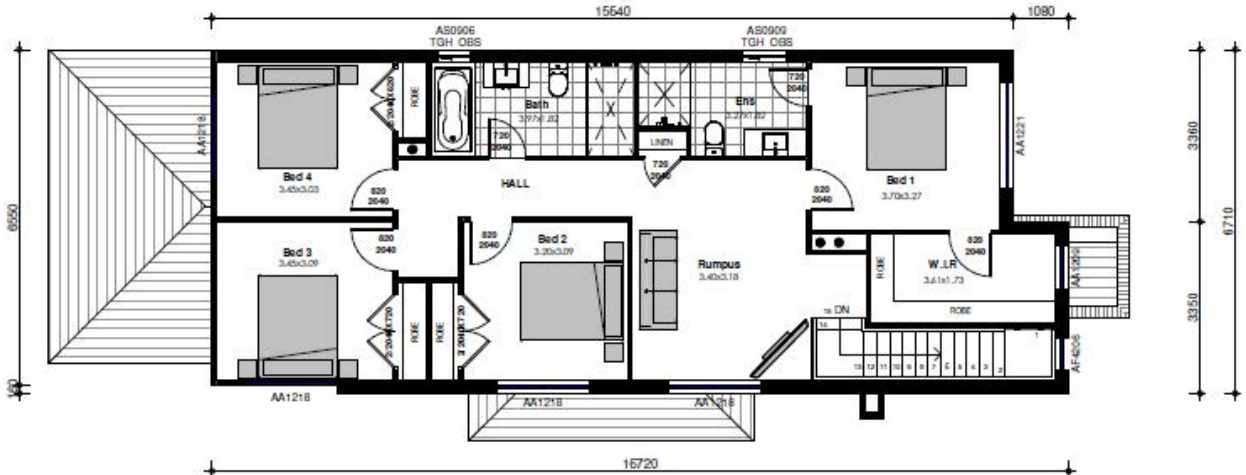
Lot 262, Kirsh Street, Werrington

Block Size: 267m² | House Size: 241.34m²

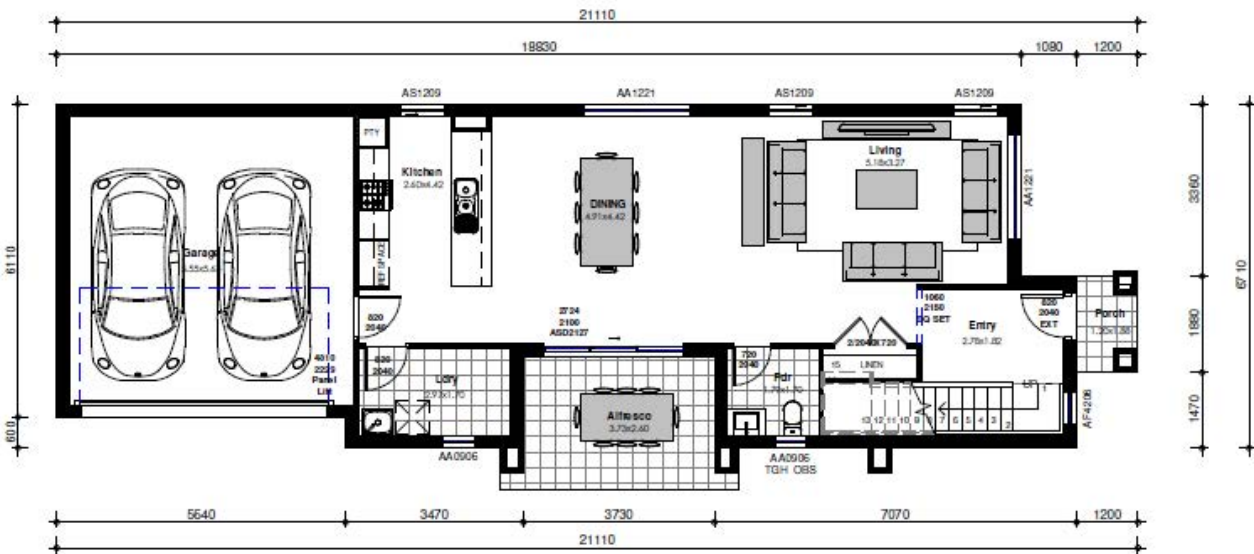
Create your own sanctuary in the expansive Sussex 24. Family/Living spaces interlace to create a multi layered free flowing hub of activity. If you prefer private spaces, you'll enjoy relaxing in the front living area or quiet private retreat upstairs.

- 600mm retractable rangehood, gas cooktop and electric oven
- 2400mm ceiling height to Ground and First Floor
- 3000L Colorbond Slimline Rainwater Tank
- POLYTEC matt laminate cabinetry
- Built in robe to bedroom with white melamine shelving.

Images are shown for illustrative purposes and may not always represent the final product. ZAC Homes has the right to alter prices and inclusions without prior notice. Based on 500mm cut and fill, no allowance for BAL or DEB. Extra charges may apply. All designs are copyright to ZAC Homes Pty Ltd. Builders License No. 47259C. Date issued: 01.03.2023



FIRST FLOOR PLAN



GROUND FLOOR PLAN

Images are shown for illustrative purposes and may not always represent the final product. ZAC Homes has the right to alter prices and inclusions without prior notice. Based on 500mm cut and fill, no allowance for BAL or DEB. Extra charges may apply. All designs are copyright to ZAC Homes Pty Ltd. Builders License No. 47259C. Date issued: 01.03.2023

Optional Upgrades:

- 1. Driveway - \$8,000
- 2. Landscaping - \$20,000
- 3. Laminate flooring - \$1,000
- 4. Reverse Cycle Ducted Air-Conditioning - \$9,000

NAME: _____

SIGNATURE: _____

All items above are subject to individual designs and floor plans. House and land packages are subject to pre determined items. ZAC Homes has the right to alter prices and inclusion without prior notice. All designs are copyright to ZAC Homes. Dated 01.03.2023