



Freemont 24

 4  2.5  1

Lot 436, 120 Riverstone Road, Riverstone

Block Size: 350m² | House Size: 219.57m²

Package Includes: Essential Inclusions

INTERNAL

- Builders range 20mm Stone benchtop to the kitchen
- Stainless steel dishwasher
- Tiles to the Main floor
- Carpet to the Bedrooms (and staircases for double storeys)
- Roller blinds
- Oyster lights to Main living areas and Bedrooms
- 7.1 Kw Split system Air conditioner
- Remote Garage door opener
- TV Antennae
- Alarm system

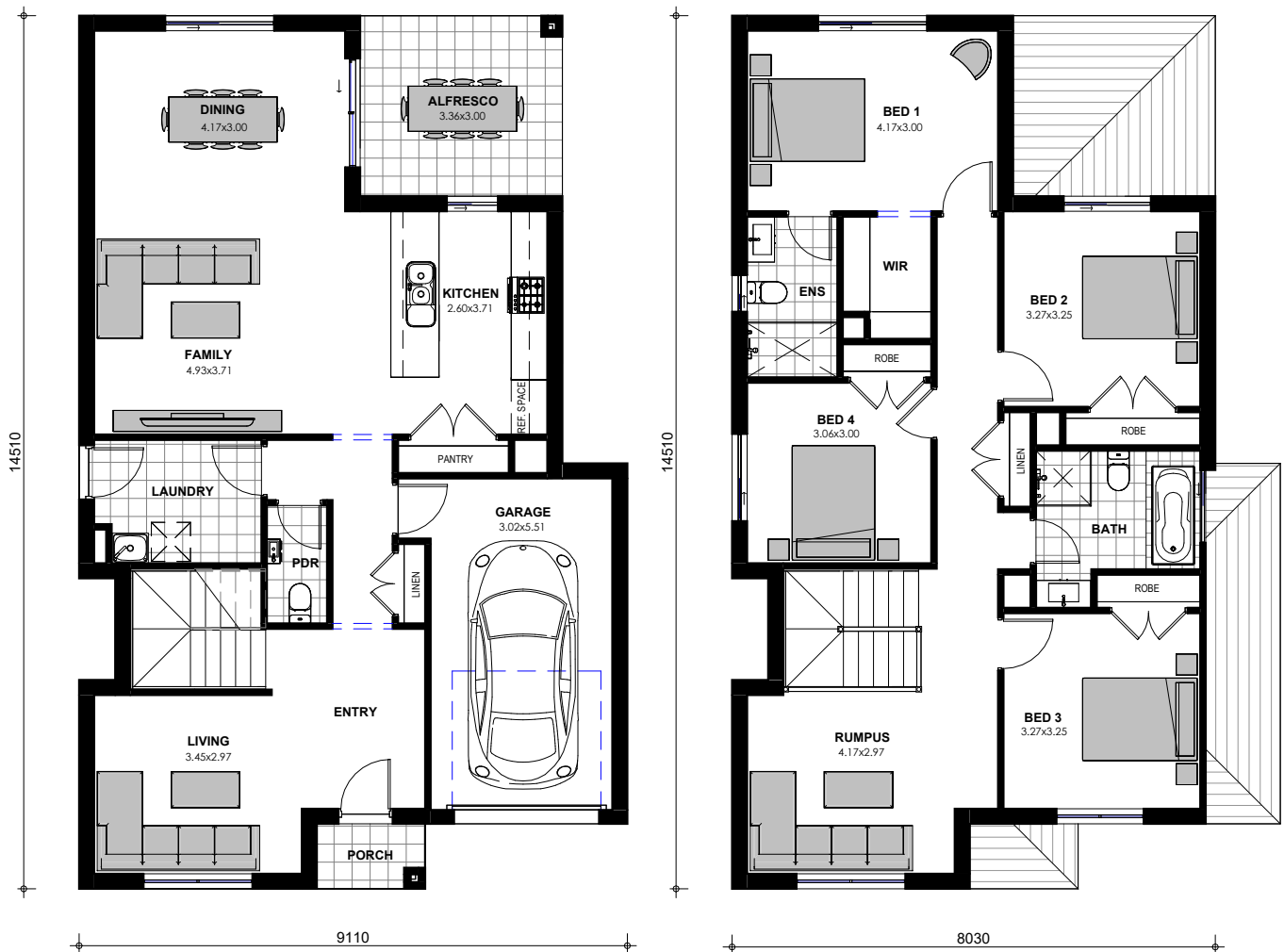
EXTERNAL

- Tiles to the Porch and Alfresco
- Flyscreens

LANDSCAPING

- Colour through concrete driveway
- Turf to front and rear yard
- Garden Bed with Edging
- Clothes line
- Letterbox
- Fencing, including a Gate

Images are shown for illustrative purposes and may not always represent the final product. ZAC Homes has the right to alter prices and inclusions without prior notice. Based on 500mm cut and fill, no allowance for BAL or DEB. Unless noted otherwise, packages exclude, but not limited to: rock/ shale/sand excavation, acoustic/ bushfire/flood report and requirements, building adjacent or over sewers, landscaping, retaining walls, driveway, steps, landings and additional BASIX/NATHERS requirements. All designs are copyright to ZAC Homes Pty Ltd. Provisional additional site costs allowed \$10,000. Builders License No. 47259C. Date issued: 10.08.2023



Images are shown for illustrative purposes and may not always represent the final product. ZAC Homes has the right to alter prices and inclusions without prior notice. Based on 500mm cut and fill, no allowance for BAL or DEB. Unless noted otherwise, packages exclude, but not limited to: rock/ shale/sand excavation, acoustic/ bushfire/flood report and requirements, building adjacent or over sewers, landscaping, retaining walls, driveway, steps, landings and additional BASIX/NATHERS requirements. All designs are copyright to ZAC Homes Pty Ltd. Provisional additional site costs allowed \$10,000. Builders License No. 47259C. Date issued: 10.08.2023